

# Proposed New Schools in Cheadle Hulme for the Laurus Trust



## Introduction

The Laurus Trust is a newly formed Education Trust with Cheadle Hulme High School, the founder school, at its centre.

Cheadle Hulme High School is a high performing academy converter with a reputation locally, and further afield, for outstanding teaching and learning through the relentless pursuit of excellence and a determination to ensure that every child succeeds.

It is a Teaching School and has been judged Outstanding in every category by Ofsted in 2011 and 2015. In the new 2016 Progress 8 Headline measure CHHS came in the top 5% of schools nationally. Gorsey Bank, a high performing school based in Wilmslow, ranks in the top 1% of primary schools according to the Sunday Times 'Parent Power' league table.

The Trust are planning to expand this excellent approach to teaching and learning by establishing a new site for both a primary school and secondary school in Cheadle. The proposed site is the land adjacent to the Cheadle 6th Form College, on Cheadle Road. An initial public engagement event was held in October 2016 and local people's views were sought.

A contractor partner, BAM Construction, has now been selected and the designs have been progressed. We now want to share the updated proposals with the local community and get your views before we make a planning application later in June.

### Timeline:

Initial development of proposals by the Trust and their advisers	Autumn 2016
Local Engagement Sessions	November 2016
Competitive bid process to appoint a contractor team	January to March 2017
BAM selected as preferred contractor partner	April 2017
Local Engagement Councillor Drop In Session	12 / 13th June 2017
Local Engagement Public Drop In Session	14th June 2017
Review feedback from engagement and finalise proposals	
Submit Planning Application	End June 2017
Application Determined by Stockport Council	October 2017
Start Construction	November 2017
School Opens	September 2018



# Proposed New Schools in Cheadle Hulme for the Laurus Trust

## Why do we need these schools in Cheadle Hulme?

### A new Primary School

In 2014 Cheadle Hulme High School and The Laurus Trust were asked by the then Liberal Democrat Council to write a free school bid because of the shortage of primary school places in Cheadle Hulme.

The Leader of the Council Sue Derbyshire issued the following press release:-

“The primary schools in this area (Cheadle Hulme) are full. And it is projected that without an additional school being created there will be pressure on local school places. We welcome this bid that is being led by the Cheadle Hulme High School as it will help deliver the extra places that are needed.”

### A new Secondary School

Stockport Council, in a variety of documents, make the urgent and growing need for new secondary school places very clear.

“Over the next 7 years the current limited capacity of 200 spare places we have in 2015 in Year 7 will quickly II and by 2018 we will require in addition a further 300 places, rising to 500 places by 2021”

(Stephen Bell Secondary School Capacity in Stockport 2015-2028)

This shortage of places is particularly acute in the West area of Stockport:

“For this area of Stockport (the West) parental choice is

now compromised and dozens of families have to be offered the nearest school with spaces, and those places will not be in the West area.

The West area for this exercise comprises Cheadle Hulme High School, Kingsway, St James, Stockport Academy and Priestnall.” (2017 Spring Term Governors Briefing Papers)

Stockport Council have also stated that:

“The very large numbers in primary school are now entering the secondary phase. Interventions such as expansions and Free Schools are likely to be needed before 2019 to accommodate the young people”

(Stockport Council Education Report January 2017)

If the Laurus Trust do not build these schools Stockport Council have also been very clear that they do not have any basic needs funding to build any new schools or expand any existing ones themselves.

“This challenge is heightened because the Local Authority currently has no Basic Needs Grant allocated from the DfE to initiate projects for 2017-2019”

(Stockport Council Education Report January 2017)



# Proposed New Schools in Cheadle Hulme for the Laurus Trust

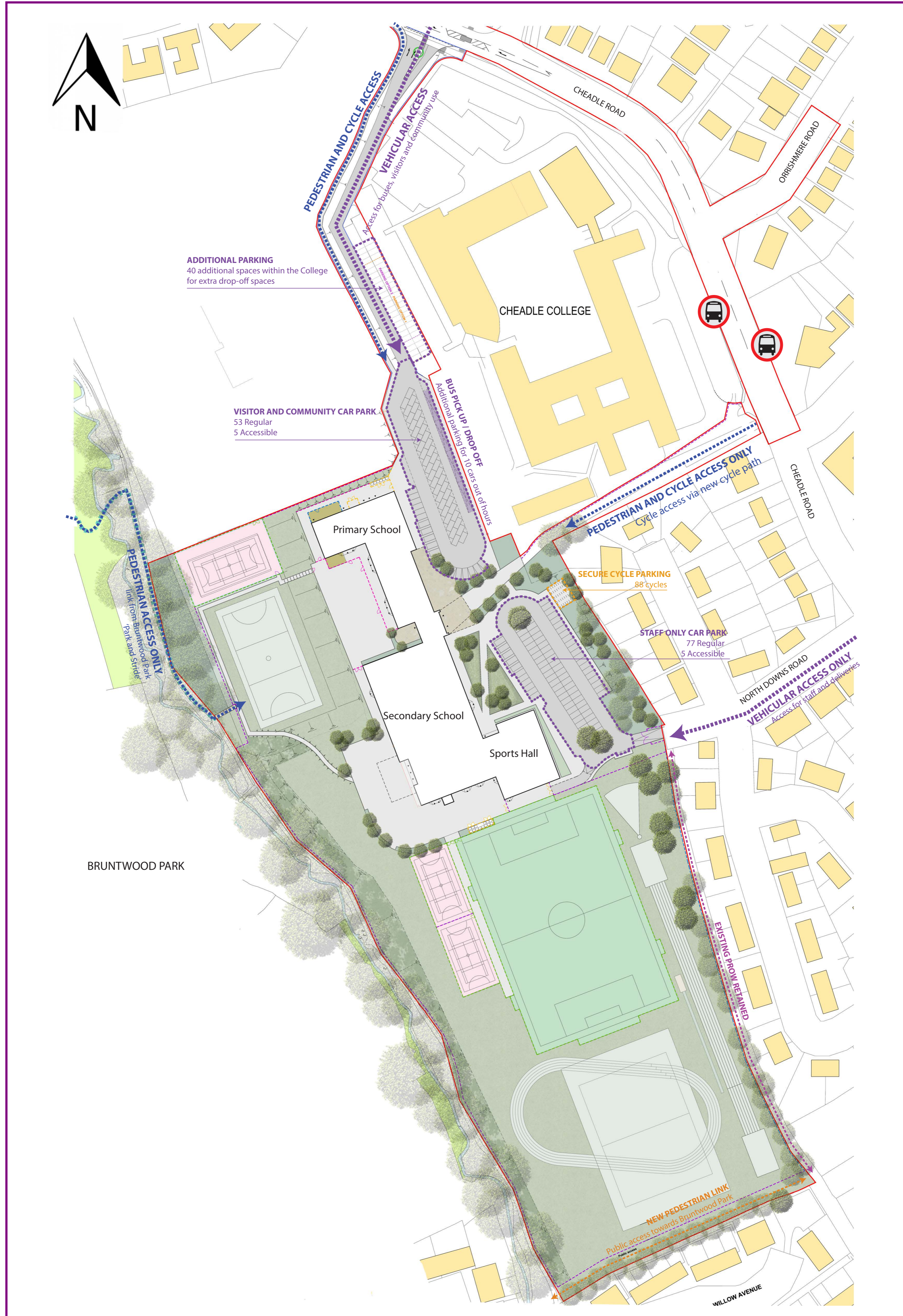
## Consultation Update

The contractor team has developed the proposals for the schools with the Trust over the competitive bid period. This has involved working out the details of the building design, landscaping, sports provision, access and parking.

KEY COMMENTS FROM NOVEMBER 2016 ENGAGEMENT SESSIONS:	HOW WE'VE LISTENED...
How will congestion on Cheadle Road be managed?	<p>We will ease traffic congestion by:</p> <ul style="list-style-type: none"> <li>• Undertaking highway improvement works to Cheadle Road (see separate board)</li> <li>• Having a staggered start and finish time for the schools to further ease impact on Cheadle Road</li> <li>• Using a 'park and stride' facility at Bruntwood Park</li> </ul>
Will the neighbouring streets be used for parking?	<p>No, as part of our developing design proposals we have:</p> <ul style="list-style-type: none"> <li>• Parking available on site for staff, visitors and community users</li> <li>• Provided drop off and pick up facilities on site, and within Cheadle College site and at Bruntwood Park</li> </ul>
Will North Downs Road be used for pupil drop off and pick up?	<p>No, as part of our developing design proposals we have:</p> <ul style="list-style-type: none"> <li>• Identified North Downs Road as an access point for use by staff members and school deliveries only</li> <li>• Access at this point will be controlled by an automated vehicular gate</li> <li>• There will be no pedestrian gate</li> </ul>
Will the pedestrian route to the main entrance be safe?	<p>Yes, in developing our design proposals we have:</p> <ul style="list-style-type: none"> <li>• Identified the main pedestrian access will be through a new walkway from Cheadle Road adjacent the Cheadle College</li> <li>• Provided a secondary pedestrian route from the main entrance at Cheadle College</li> <li>• A 'Park and Stride' route will be used between Bruntwood Park car park and the schools</li> </ul>
What facilities will be available for community use?	<p>A number of facilities will be made available for community use including:</p> <ul style="list-style-type: none"> <li>• An indoor Sports Hall (for badminton, table tennis, netball, football, basketball and trampolines)</li> <li>• An external Multi Use Games Area (MUGA)</li> <li>• An Under 12 rugby pitch</li> <li>• A full size 3G floodlit pitch</li> <li>• The internal Auditorium and Activity Studio</li> </ul>
How has residential amenity been considered?	<p>Yes, in developing our design proposals, we have:</p> <ul style="list-style-type: none"> <li>• Carefully positioned the school buildings and located them as far towards Bruntwood Park as possible to minimise impact on neighbours</li> <li>• Carried out a lighting and noise assessment to consider the impact on neighbours</li> <li>• Provided multiple access points for vehicles to lessen the impact on the surrounding road network</li> <li>• Located the main vehicular access point from Cheadle Road to minimise the impact on North Downs Road</li> </ul>
Will there be any disruption during construction works?	<p>Possibly, but our contractor partner will engage with the local residents to minimise disruption and engage with them regularly via:</p> <ul style="list-style-type: none"> <li>• Project specific website</li> <li>• Monthly newsletters</li> <li>• Facilitating drop in sessions</li> </ul>

# Proposed New Schools in Cheadle Hulme for the Laurus Trust

## Movement and Access



# Proposed New Schools in Cheadle Hulme for the Laurus Trust

## Community Facilities



These include:

Sports Hall accommodating 4 badminton courts. Additional markings for netball and basketball. Space for table tennis, football and trampolines

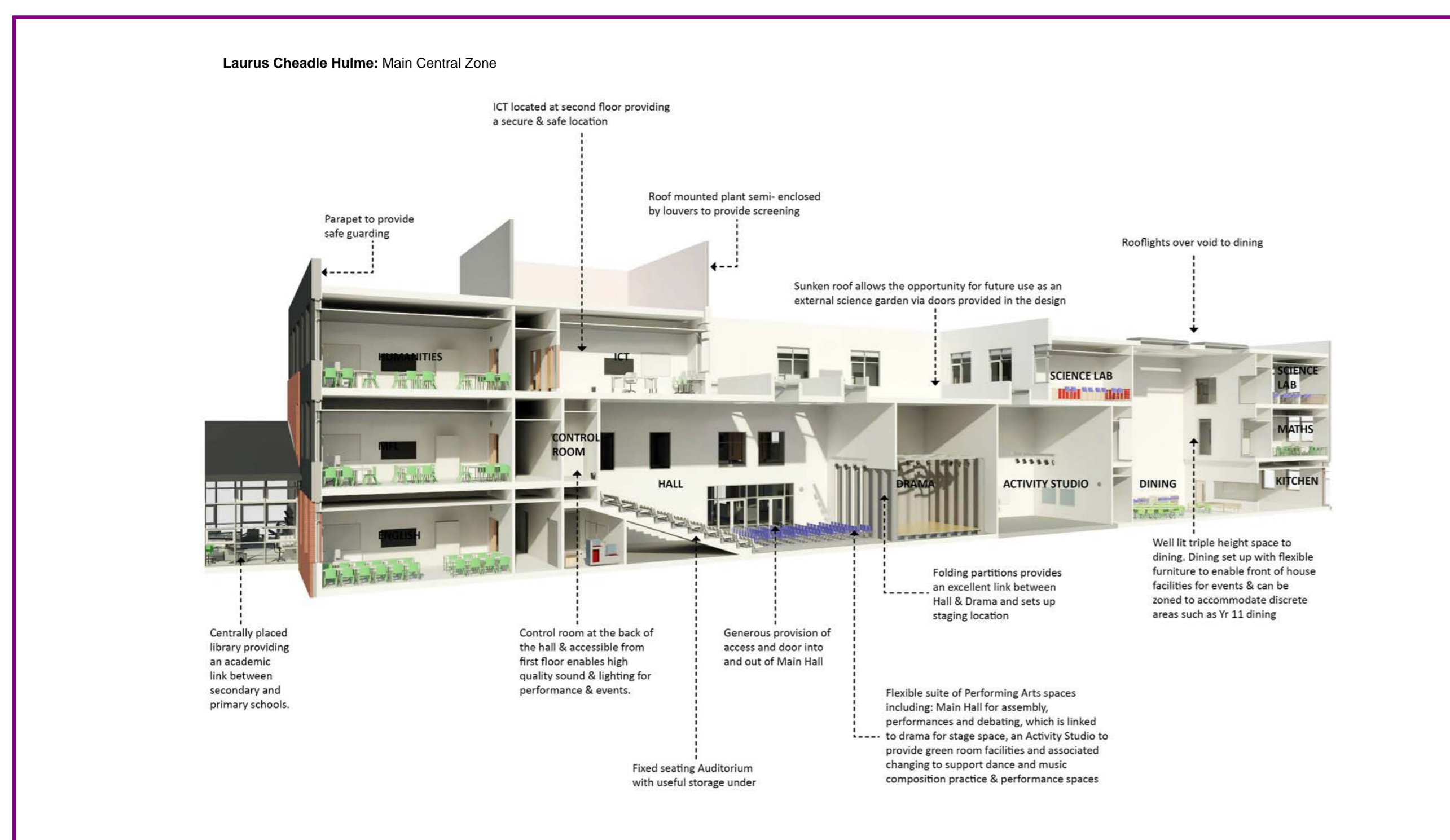
2 multi use games areas (MUGA)

Full size artificial grass pitch, with lighting for evening use

Grass pitches with space for U12s Rugby pitch and variety of athletics activities

Activity Studio

Auditorium

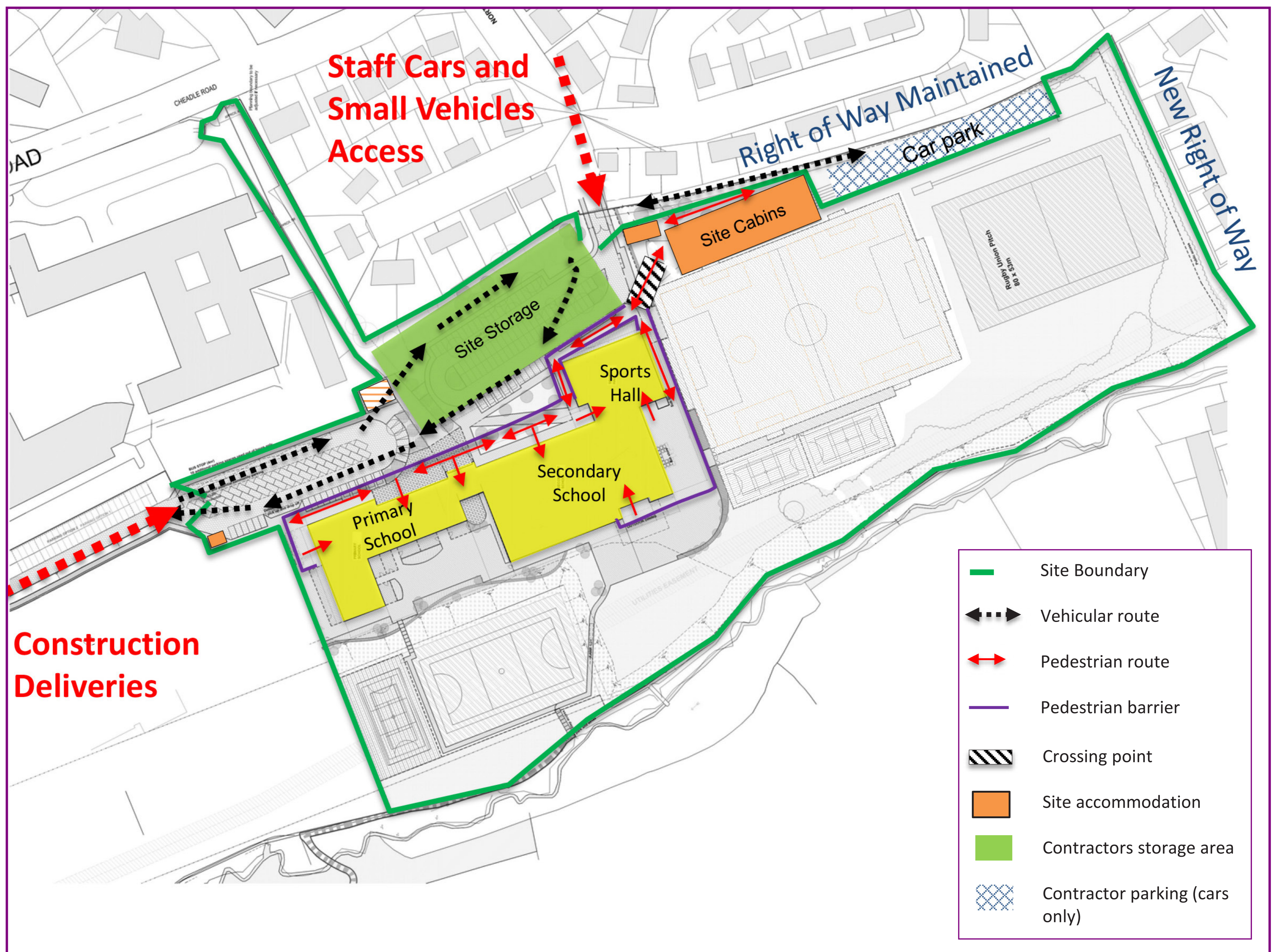


# Proposed New Schools in Cheadle Hulme for the Laurus Trust

## Construction Delivery

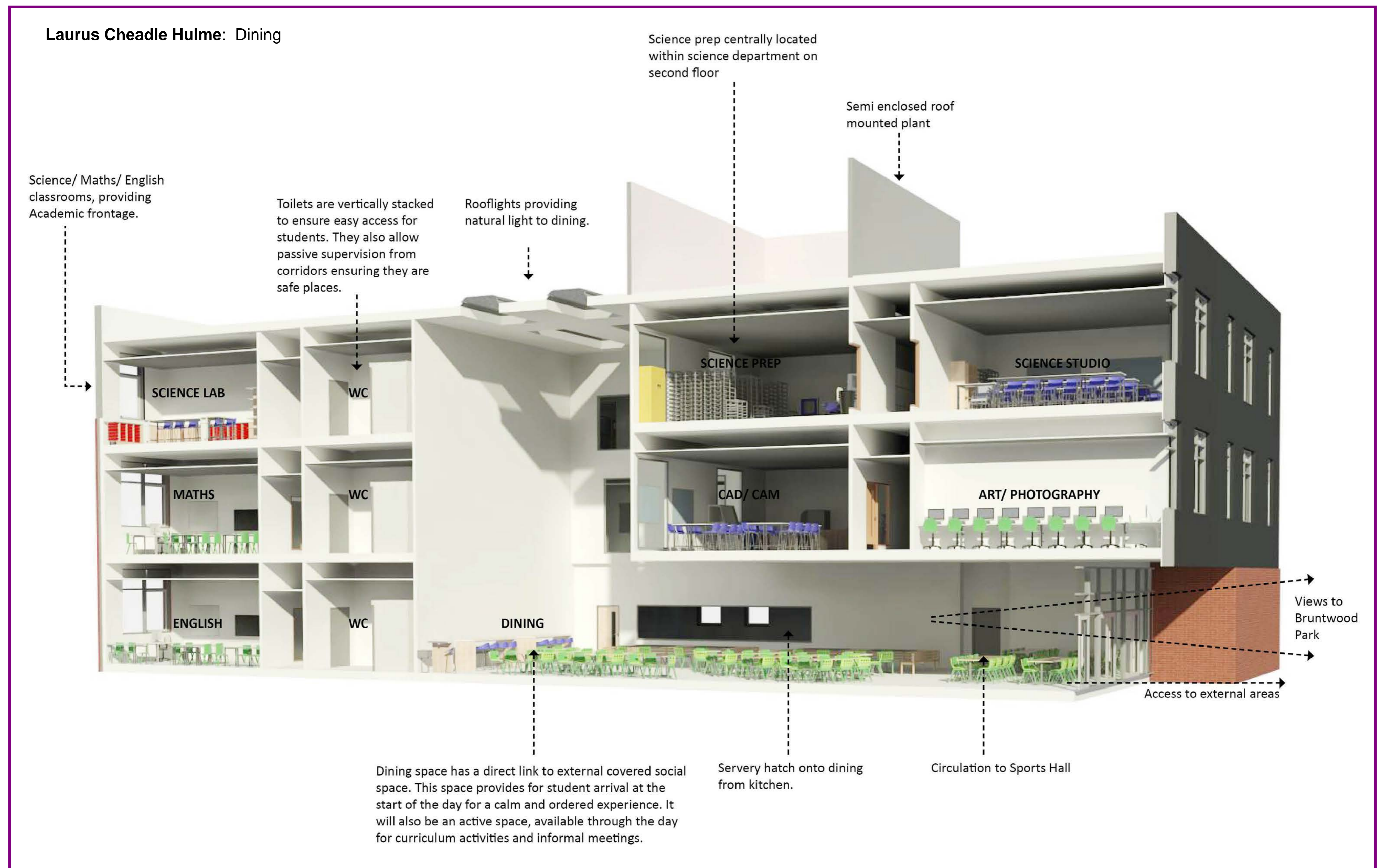
### Construction Timeline

- Construction works commence – November 2017
- Complete Cheadle Hulme Primary School – August 2018
- School Opens – September 2018
- Complete construction works – January 2019
- Overall construction duration – approximately 15 months



# Proposed New Schools in Cheadle Hulme for the Laurus Trust

## Design Images



# Proposed New Schools in Cheadle Hulme for the Laurus Trust

## Highways Improvements

### Highway Improvements

To offset traffic concerns we will:

1. Widen Cheadle Road to provide a dedicated right turning lane into Cheadle College so traffic flow on Cheadle Road is not held up
2. Widen the exit from Cheadle College on to Cheadle Road to provide separate right and left turning lanes so the exit is not blocked by right turners
3. Widen Cheadle Road to provide a dedicated turning lane into Orrishmere Road
4. Widen the junction of Orrishmere Road on to Cheadle Road to provide separate right and left turning lanes to improve the current congestion
5. Provide a dedicated cycle lane along a section of Cheadle Road to extend existing cycle path to the Village
6. Widen a section of footpath along Cheadle Road





## Admissions

